

# SECTION 35, T.6N., R.2W., S.L.B.& M.

IN WEST HAVEN CITY

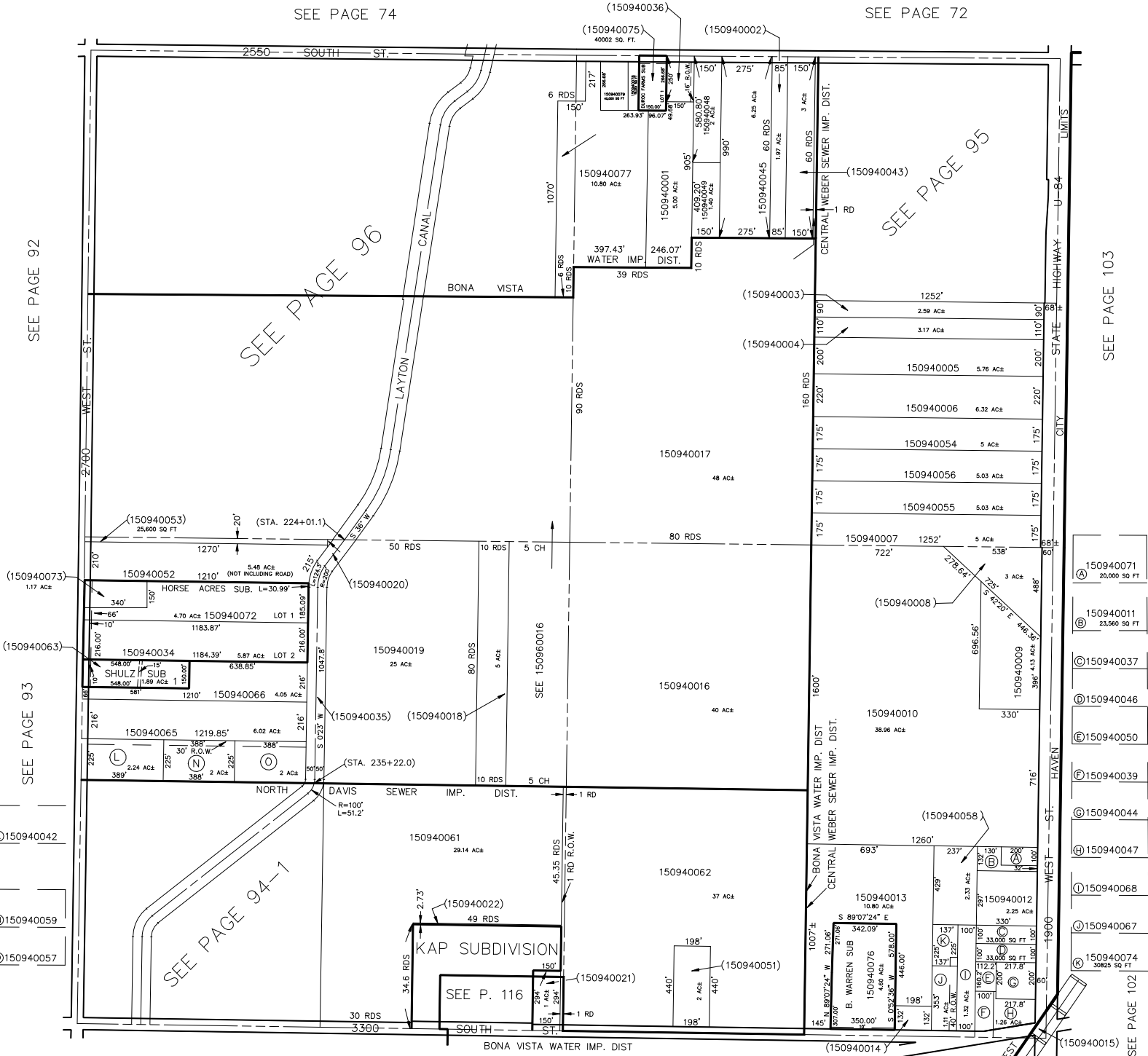
TAXING UNITS: 172,276,277,281

SCALE 1" = 400'

94

SEE PAGE 74

SEE PAGE 72



SEE BOOK 8, PAGE 28

SEE BOOK 8, PAGE 6